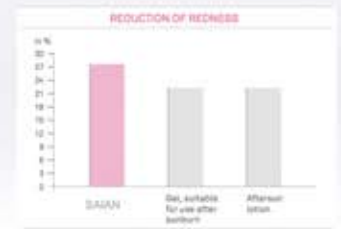


# Medical Grade Collagen Masks

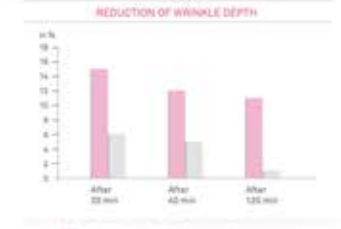
## The soothing effect

Collagen is the most important component of the connective tissue and responsible for the skin's elasticity and firmness. Collagen peptides are tiny building blocks of the collagen network. As the connective tissue naturally degrades, signal peptides (matrikines) develop and stimulate tissue renewal. Aging processes or damaging external influences negatively affect the condition of the skin. Consequently, the tissue loses its elasticity, moisture content and regenerative ability. **SAIAN® Pure Collagen Masks** help the skin to rapidly and effectively regain its natural balance. The study measured a reduction of UV-induced skin reddening after application of **SAIAN®** by an average of 27.5%, whereas the listed comparative products generated a lower effect (measurement obtained 24 hours after applying the test products twice in comparison to untreated skin).



## The wrinkle and line-smoothing effect

**SAIAN®** firms and smoothens the skin. In the study, a reduction in the wrinkle depth around the eyes by an average of 15% was determined 20 minutes after the application. The face mask of a leading cosmetics brand achieved only an average reduction of 6% within the same time frame.



## The moisturizing effect

**SAIAN®** increases the skin's moisture balance and thus improves its structure and firmness. 20 minutes after the application the study measured an increase in skin moisture around the eyes by an average of 59%. The comparative product accomplished only an average increase of 12% and after two hours, even a reduction compared to the initial value was detected.



## Immediate soothing of irritated skin

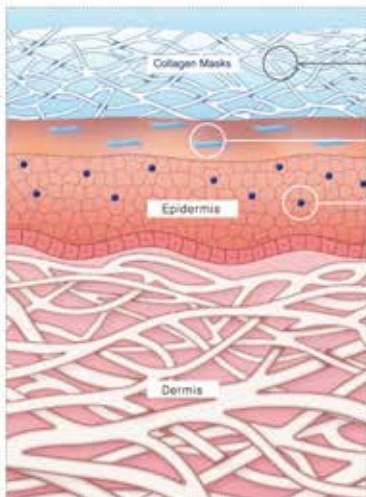
**SAIAN® Pure Collagen Masks** relax irritated skin, calm and rapidly reduce reddening. The skin's regenerative capacity is supported.

## Noticeable smoothing and firming

Fine lines and wrinkles appear to be significantly reduced. The skin becomes more even, it feels soft and smooth. The skin's renewal process is supported.

## Intensive hydration

The collagen biomatrix has a high water-binding capacity. It ensures an effective moisture transfer and gives the skin a fresh, radiant appearance.



1

>> Native, insoluble collagen fibers in **SAIAN® Pure Collagen Masks** form a three-dimensional network. This corresponds to the collagen structure of the human skin and is thus well-tolerated. The highly concentrated collagen has high water-binding capacity, thus ensuring an intensive moisture transfer to the skin.

2

>> Native collagen molecules dissociate from the mask via activation. They strengthen the skin's moisture-binding capacity and support the smoothing of wrinkles.

3

>> Skin-identical collagen peptides are released by **SAIAN® Pure Collagen Masks** in parallel. Their size and electric charge enable them to penetrate the skin. Peptides act as signal substances in skin recovery, influencing tissue regeneration and cell metabolism.