



ACTIVE INGREDIENTS

Lipo-Oligopeptides for Fuller Beautiful Eyelashes

PRODUCT DESCRIPTION

SymPeptide® is a series of peptides for topical cosmetic applications with excellent efficacy

- > Sold as a 1000ppm solution in glycerin/water, preservative free
- > Recommended dose: 2-10%
- > Stimulate keratin genes

BENEFITS

- > Bioavailable lipo-oligopeptides (LOPs)
- > Fights signs of aging and inflammation
- > Eyelash appearance enhancer
- > Colorless to beige, odorless solution that does not impact the formulation aesthetics
- > Complies with cosmetic regulations in USA, Europe, Japan

PRODUCTS

- > SymPeptide® 226EL (#903289) - 1000ppm solution of Myristoyl Pentapeptide-17
 - INCI: Glycerin, Water (Aqua), Myristoyl Pentapeptide-17
- > SymPeptide® 235 (#696059) - 1000ppm solution of Myristoyl Hexapeptide-16
 - INCI: Glycerin, Water (Aqua), Myristoyl Hexapeptide-16
- > Both stimulate keratin genes

✓ SymPeptide® 226EL and 235 enhance the appearance for lengthen/thicken eyelashes

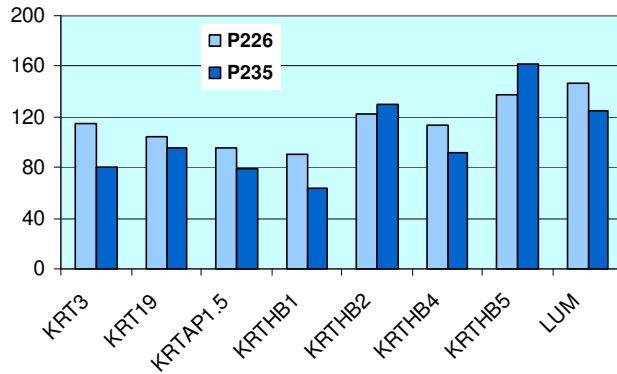
✓ SymPeptide® 226EL and 235 fortify the hair, noticeably intensifying one's expression

SymPeptide®: supporting the newest lash treatment technology for naturally beautiful, truly plentiful eyelashes!



Stimulate Keratin Genes

- > Agilent DNA Microarray Assay on EpiDermFT™ consisting of normal, human-derived epidermal keratinocytes
- > Percent increase in gene expression over untreated control after 24 hours with 10ppm peptide exposure



SymPeptide® 226EL and 235 significantly stimulate keratin genes

Eyelash Growth *in vivo* Data

- > Panel of 15 subjects, 24-82 years old
- > Test product is a conditioner with 10% SymPeptide® 226EL (100ppm peptide) used once a day
- > Eyelash measurement by SigmaScan software

**Eyelashes appear thicker/fuller
+ 25% Increase
After 2 Weeks of Use**



after 2 weeks



"These suggestions and data are based on information we believe to be reliable. They are offered in good faith, but without guarantee, as conditions and methods of use of our products are beyond our control. Symrise makes no warranties, either expressed or implied, as to the accuracy or completeness of this data and expressly disclaims any implied warranty of fitness for a particular use. We strongly recommend that prospective users determine for themselves the suitability of Symrise materials and suggestions for any use prior to their adoption. We also expect that prospective users, as required, obtain approval for all of their uses of our products, data and suggestions from the appropriate regulatory authorities. This includes but is not limited to adherence to US Food and Drug Administration rules on permissible cosmetic product claims. Suggestions for uses of our products or the inclusion of data or descriptive material from patents and the citation of specific patents in this publication may not be understood as recommending the use of our products in violation of any patent or as a permission or license to use any patent of Symrise and the prospective user is solely responsible that the use of our products, data and suggestions does not and will not infringe any third party intellectual property right."